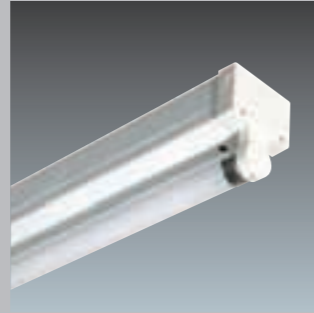


Popular Range

T8 fluorescent batten



Lamps

T26(FD)4000K G13 18-58W

Standards

EN 60598 CE 850°C IP20 CCC

- Equipped with HF ballast for maximum economic operation
- Choice of symmetric reflector or asymmetric reflector
- Clip-on cover plate for quick installation
- Can be surface or suspension mounted
- Slim spine with durable, corrosion resistant finish
- Emergency lighting version available on request

Materials/Finish

Body: Cold-rolled steel plate painted white.
End cap: Polycarbonate.
Reflector: Cold-rolled steel plate painted white.

Installation/Mounting

Power cable entry from the reverse. Can be surface or suspension mounted. The clip-on cover is secured to the body via screws and cabling is easy to install. The reflector is also screwed onto the lamp body.

Specification

To specify state: A cold-rolled steel plate body painted white, fitted with different reflectors Popular Range batten can be used for most commercial and industrial lighting applications. The batten is available in single-tube or dual-tube versions and wattages include 18/36/58W. As Thorn Popular Range.

Ordering Guide

Lamp to be ordered separately.

Description	Model	Socket	Wt (kg)	SAP Code
Bare Batten				
EB 1x18W T26 HF-CG	PPZ118 1x18W	G13	1.1	22600354
EB 1x36W T26 HF-CG	PPZ136 1x36W	G13	1.9	22600355
EB 1x58W T26 HF-CG	PPZ158 1x58W	G13	2.05	22600356
EB 2x18W T26 HF-CG 1B	PPZ218 2x18W	G13	1.2	22600357
EB 2x36W T26 HF-CG	PPZ236 2x36W	G13	2.1	22600358
EB 2x58W T26 HF-CG	PPZ258 2x58W	G13	2.25	22600360
Symmetric Reflector				
PPR12	Dual Y Reflector 1x18W			22604580
PPR22	Dual Y Reflector 2x18W			22604579
PPR14	Dual Y Reflector 1x36W			22604572
PPR24	Dual Y Reflector 2x36W			22604571
PPR15	Dual Y Reflector 1x58W			22604576
PPR25	Dual Y Reflector 2x58W			22604575
Asymmetric Reflector				
PPA12	Single Y Reflector 1x18W			22604582
PPA22	Single Y Reflector 2x18W			22604581
PPA14	Single Y Reflector 1x36W			22604574
PPA24	Single Y Reflector 2x36W			22604573
PPA15	Single Y Reflector 1x58W			22604578
PPA25	Single Y Reflector 2x58W			22604577

Note: Emergency versions and dimmable versions available on request

